
CITY OF KELOWNA

MEMORANDUM

Date: July 2, 2008
File No.: 6240-20
To: City Manager
From: Andrew Gibbs, Park Design & Construction Supervisor
Sandra Kochan, Cultural Services & Public Art Coordinator
Subject: Stuart Park Concept Plan and Public Art Selection

RECOMMENDATION:

THAT City Council endorse the Stuart Park Concept Plan, dated May 7, 2008;

AND THAT City Council authorize staff to issue a Request for Proposals to consultants for the provision of detailed design and construction services for Stuart Park;

AND THAT City Council award the public art project for Stuart Park to Brower Hatcher of Mid-Ocean Studio in Providence, Rhode Island, for his proposed sculpture "Bear", subject to staff successfully negotiating a contract with Brower Hatcher for the public art project for an amount of \$160,000.00;

AND FURTHER THAT \$60,000.00 be contributed from the Public Art Reserve Fund for the public art project, with the balance of funding to come from the Parks Division's Capital Budget for Stuart Park.

BACKGROUND:

Stuart Park Concept Plan

On May 12, 2008 staff reported to Council on the status of the Downtown Waterfront Park Plan and informed Council of an upcoming public open house (held May 28). At the Council meeting staff promised to return to Council for endorsement of the Stuart Park Concept Plan when it was completed.

Stuart Park will be Kelowna's downtown civic park. It will be an active place where the community gathers for a wide range of formal and informal events. It will be where the community honours its leaders and engages its citizens. The park will reflect the community's heritage; its grasslands, forested hillsides and agricultural landscapes, the lake and the history of the site. The park will also serve the needs of Kelowna's citizens, both today and in the future. Finally, the park is being designed to be environmentally sustainable. Preliminary assessment work by the project's environmental consultant indicates that the ecological approach being taken to development of the park will result in a net gain to the environment.



The key features proposed for the park include:

- A grand public promenade along the waterfront, providing a scenic stroll along the lake and connecting Kerry Park to the promenade to Waterfront Park;
- Removal of the existing retaining wall along the shoreline and development of a functioning riparian ecosystem along the edge of the lake;
- A civic plaza that will feature a winter ice rink, an interactive summer water feature and will be a serviced year-round venue for community gatherings and events (from buskers to 1500-seat performances);
- A raised central area that functions as a serviced stage for the civic plaza, provides informal seating and is the site of a major public art piece entitled 'Bear' (see below);
- An enhanced streetscape for Water Street, defining it as a civic street and including recognition for recipients of the annual community leadership awards;
- A manufactured stream and wetland for re-circulating lake water to improve the water quality of the boat basin in front of the park;
- An urban, non-fruit tree, 'orchard' that pays homage to the community's agricultural roots;
- Conversion of an existing asphalt parking lot at the end of Queensway to additional water surface for the lake and a small habitat island, and including improvements to acknowledge the site as the community's historic ferry wharf;
- Relocation of the yacht club building and deep keel boat launch and relocation of near shore yacht club moorage slips to deeper water; and
- A central service building that includes a café, public washrooms and support infrastructure for the park.

While the schedule for park development is subject to the timing and conditions of federal environmental approvals, which have yet to be obtained, the current schedule anticipates that construction of Phase 1 will start in late 2009 and be complete in late 2010.

Stuart Park Public Art – "Bear"

In June 2003, when the design of Stuart Park first began, the Public Art Committee issued an RFP for a major piece of public art for Stuart Park. Of the 32 submissions received, four were short-listed and one was ultimately selected by the Public Art Committee as the preferred proposal - a large piece entitled 'Bear', by artist Brower Hatcher (see Appendix B).

The Public Art Committee, at its meeting on June 18, 2008 confirmed its recommendation of Brower Hatcher's proposal for 'Bear' for Stuart Park. The 'Bear' is proposed to be located in an elevated position near the centre of Stuart Park, and this portion of the park has been specifically designed to compliment the "Bear" sculpture. The artist, Brower Hatcher, describes the sculpture as follows:

"My intent was to develop an image that would be important to the community, but also one of charm and fascination to the passerby. I wish it to be arresting enough that people will stop and look, to pace down, and spend time looking at the image and then the lake and the view. The bear would be a focal point of the park, the support structure forms a pergola-like gateway to Stuart park and the lake. The structure would attract a great deal of interest and focus attention on the extraordinary setting of the waterfront.

The work is scaled to be monumental in the site with sufficient headroom so that pedestrians can easily pass beneath. The materials are all selected for durability and are based on my 30 year history of building works with similar techniques. The base footing is concrete with a river stone center. The columns are created as layered geological and archeological elements. The shape at the top of the columns is painted steel.

The bear itself is made of two structural layers. The inner layer is a powder coated welded stainless steel framework. Onto this framework is bolted, using stainless steel and brass hardware, an inner level of tetrahedral geometry also of powder coated stainless steel. The outer layer is again built of powder coated stainless steel rods with compression fitted connections. Within the structure are referential images of bronze, glass, and found objects that represent periods of Kelowna's history from early artifacts of Okanagan people to contemporary times. These symbols include references to fruit orchards, Kettle valley, and forest fires."

Brower Hatcher was born in Atlanta, GA. He attended Vanderbilt University School of Engineering in Nashville, TN and received his degree in Industrial Design from Pratt Institute in New York. He then studied sculpture at St. Martins School of Art in London, U.K. with Sir Anthony Caro and William Tucker. He was on the faculty at St. Martins for several years and returned to the U.S. to join the faculty of Bennington College where he taught for 13 years. Hatcher ceased teaching in 1986 and has built over 30 public art projects throughout the U.S. since that time. Brower Hatcher is a recipient of 3 National Endowment for the Arts Fellowships, a Guggenheim Fellowship and an honorary Ph.D. from the State University of New York. He works at the historic Steel Yard in Providence, RI as the artistic director of Mid-Ocean Studio Inc. Mid-Ocean Studio employs a creative team of artists, designers, fabricators, and technical personnel. The team works in close collaboration with resource collaborators that include computer scientists, mathematicians, and engineers to develop a 3-dimensional, matrix based art that is conceptual, humane, intimate, and mythic.

FINANCIAL/BUDGETARY CONSIDERATIONS:

Stuart Park

The estimated total cost for the development of Stuart Park is \$7.9 million. To date the City has budgeted for and set aside \$4.4 million, including a \$500,000 grant provided by the provincial government through its Spirit Square program. These funds will be used to develop the first phase of Stuart Park, from Queensway to the yacht club building. Future phase(s) of the park's development will be funded through the City's annual budget process.

'Bear' Public Art

The value of the public art commission is \$160,000. Funding for this project is in place; \$60,000 reserved in the Public Art budget and \$100,000 from the Stuart Park project.

EXTERNAL AGENCY/PUBLIC COMMENTS:

Public Open House for the Downtown Waterfront Park Plan

As endorsed by Council (May 12 regular meeting, Item 7.4) a public open house for the Downtown Waterfront Park Plan was held May 28 at Kerry Park. The open house presented a single concept plan for the downtown waterfront that showed the City's proposal for the long term development and enhancement of the downtown waterfront park system, from the WRB Bridge to the Water Street Boat Launch, including City Park, Kerry Park and Stuart Park.

Approximately 300 people attended the open house. Public response to the plan presented at the open house was very positive. Of the 189 comment forms submitted ...

- 44% checked the option "I like all of it – build it the way it's shown";
- 45% checked the option "I like some of it – but I would make some changes";
- 5% checked the option "I'm not sure";
- 6% did not express an opinion; and

- 1 respondent indicated they did not like it at all

The comment form available for public input was open-ended and respondents raised a wide variety of issues for the entire downtown waterfront. Analysis of the responses identified a number of common themes that were specific to Stuart Park ...

- A concern about the loss of parking and the need to provide more (qty = 22)
- A need to decide on and show where the yacht club building will be relocated to (qty = 20)
- Boats and boat activities should be further from pedestrian areas and parks (qty = 19)
- Wider paths needed to accommodate pedestrians, cyclists and others (qty = 19)
- A split opinion on the desire for an outdoor skating rink (8 v 8)

Since the public open house the concept plan for Stuart Park has been revised and updated to reflect input from the public, staff and consulting team.

Respondent comments on the remainder of the downtown waterfront (i.e. Kerry Park and City Park) will be shared with Council when the Downtown Waterfront Park Plan is brought before Council in the fall.

INTERNAL CIRCULATION TO:

- David Graham, Director of Recreation, Parks & Culture
- Reid Oddleifson, Acting Director of Recreation, Parks & Culture
- Joe Creron, Parks Manager
- Lorna Gunn, Cultural Services Manager
- Doug Gilchrist, Community Development and Real Estate Manager
- Mark Watt, Environment & Solid Waste Manager

Considerations that were not applicable to this report:

TECHNICAL REQUIREMENTS:

COMMUNICATIONS CONSIDERATIONS:

ALTERNATE RECOMMENDATION:

LEGAL/STATUTORY AUTHORITY:

LEGAL/STATUTORY PROCEDURAL REQUIREMENTS:

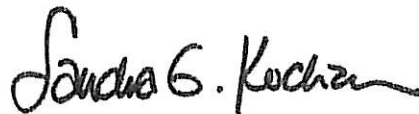
EXISTING POLICY:

PERSONNEL IMPLICATIONS:

Submitted by:



Andrew Gibbs, CSLA
Park Design & Construction Supervisor

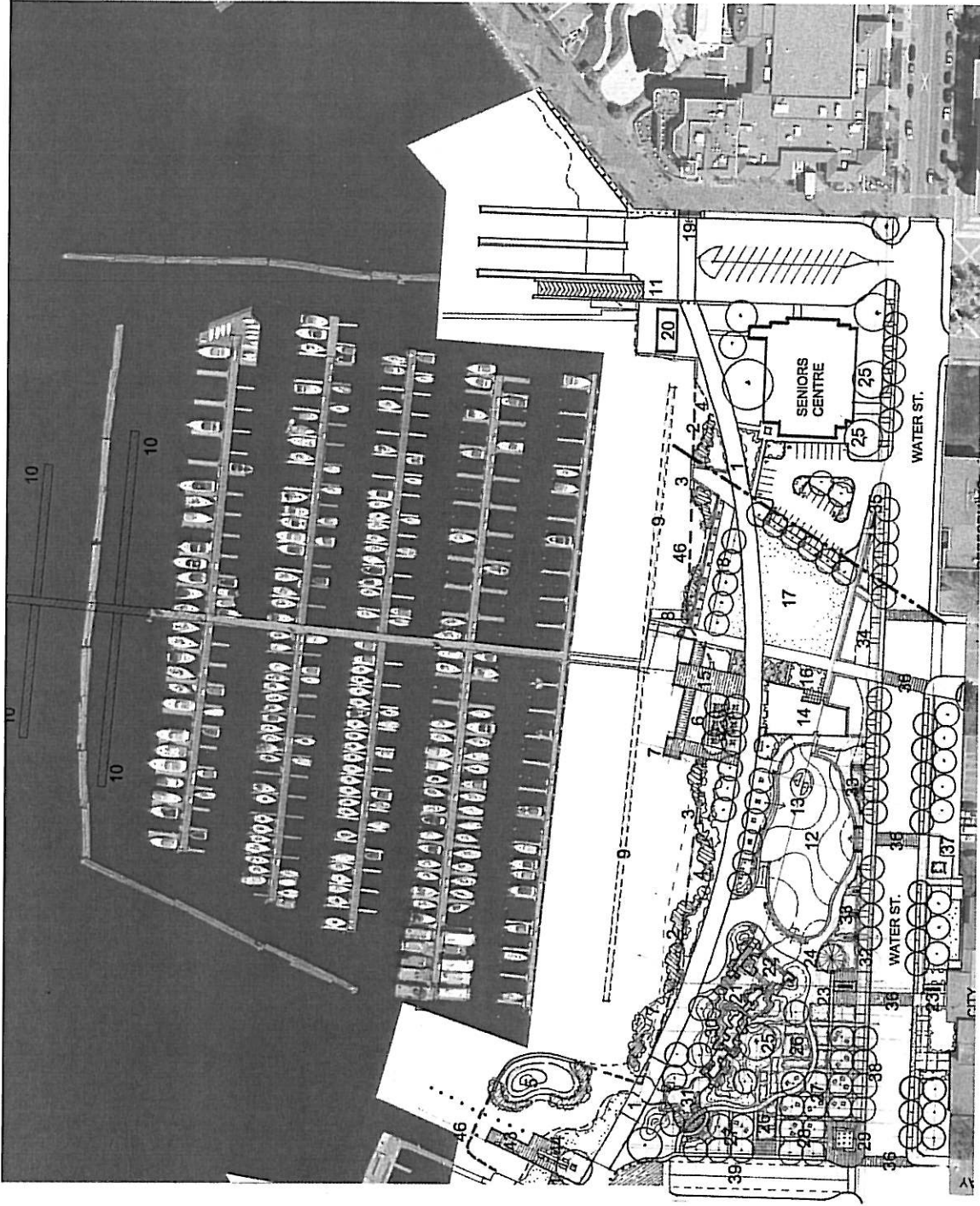


Sandra Kochan
Cultural Services & Public Art Coordinator

Attachments: Appendix A – Stuart Park (3pp)
Appendix B – 'Bear' Public Art (1pg)

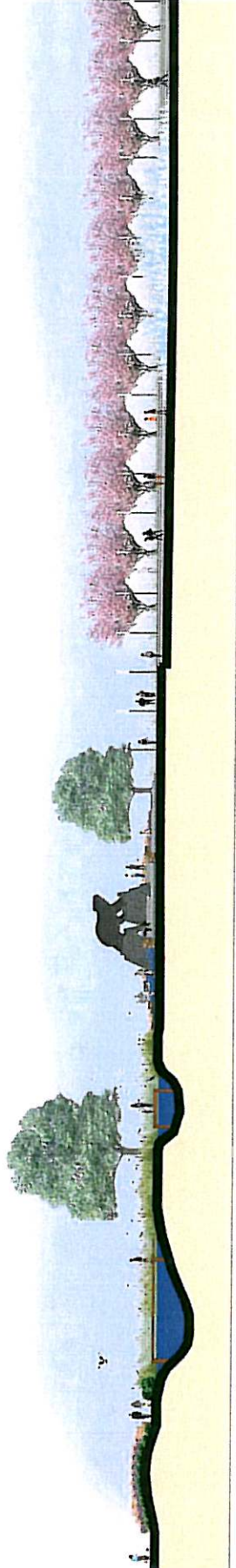
Approved for Inclusion



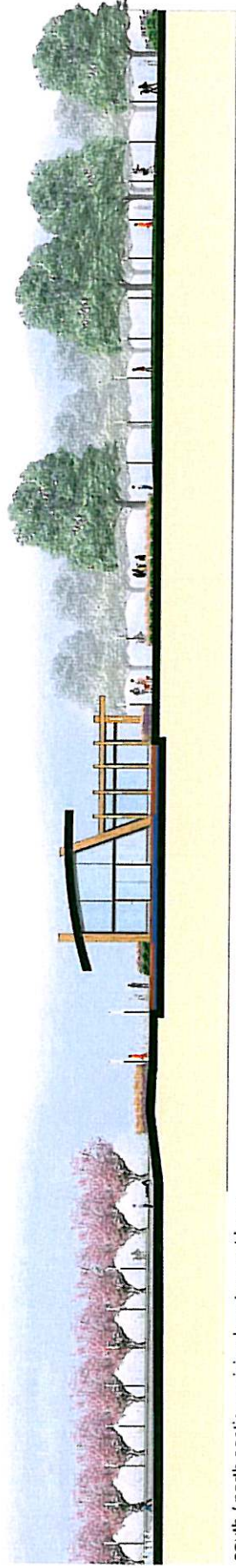


LEGEND

- 1- 6m WIDE LAKE EDGE PROMENADE
- 2- AQUATIC BENCH
- 3- FRAGMENTED CONCRETE WALL
- 4- ENVIRONMENTAL RECLAMATION AREA
- 5- HABITAT ISLAND w/ FRAGMENTED WALL
- 6- PUBLIC PATIO WITH SHADE TREES
- 7- BOARDWALK OVERLOOK
- 8- EXISTING MARINA ACCESS GATE
- 9- REMOVED BOAT MOORAGE
- 10- RELOCATED DEEP KEEL LAUNCH
- 11- PLAZA SKATE RINK
- 12- SEASONAL WATER DISPLAY
- 13- CONCESSION BUILDING
- 14- DOYLE STREET END OVERLOOK
- 15- TERRACED WATER/ AQUATIC GARDEN
- 16- FORMAL LAWN
- 17- LAKE EDGE SEATING AREA
- 18- RELOCATED STAIRS
- 19- EXISTING MUSTER BUILDING
- 20- 'KELOWNA BEAR' PLAZA
- 21- TERRACED PERFORMANCE STAGE
- 22- CITY HALL GATEWAY ELEMENTS
- 23- 'CITY' CHRISTMAS TREE
- 24- HERITAGE TREES
- 25- DISPLAY GARDENS
- 26- ORCHARD TREE BOSQUE
- 27- ILLUMINATED 'APPLE CRATE' SEATING
- 28- LIGHT BOSQUE/ WATER FEATURE
- 29- 'KNOX' MOUNTAINSCAPE
- 30- MOUNTAIN STREAM
- 31- WATER ST. STREETSCAPE
- 32- CIVIC COMMEMORATION PLAQUES
- 33- WATER FEATURE (BEACH EDGE)
- 34- PARK ENTRY SIGNAGE
- 35- PAVED CROSSWALKS
- 36- KASUGAI CONNECTION
- 37- TOUR BUS DROP OFF
- 38- RE-ALIGNED QUEENSWAY/ MILL STREET CORRIDOR
- 39- UNIT PAVING STREETSCAPE
- 40- HISTORIC FERRY LANDING/ PLAZA SPACE
- 41- VINTAGE CAR
- 42- PUBLIC ART OPPORTUNITY
- 43- HISTORIC FERRY DOCK
- 44- SHADE TREE/ SEATING AREA
- 45- EXISTING LAKE EDGE WALKWAY
- 46- LINE OF EXISTING WALL REMOVE



south / north section - welland to civic plaza

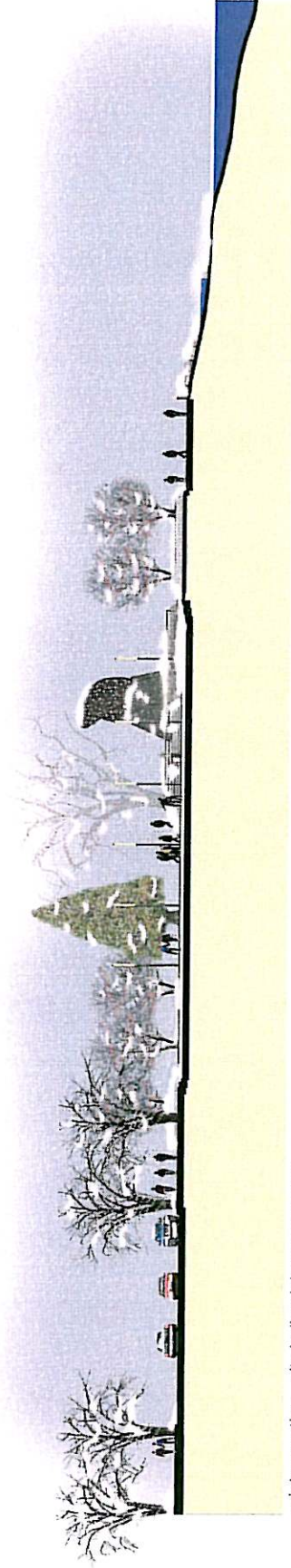


south / north section - civic plaza to great lawn



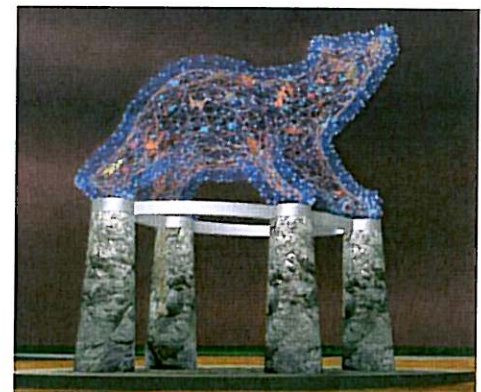
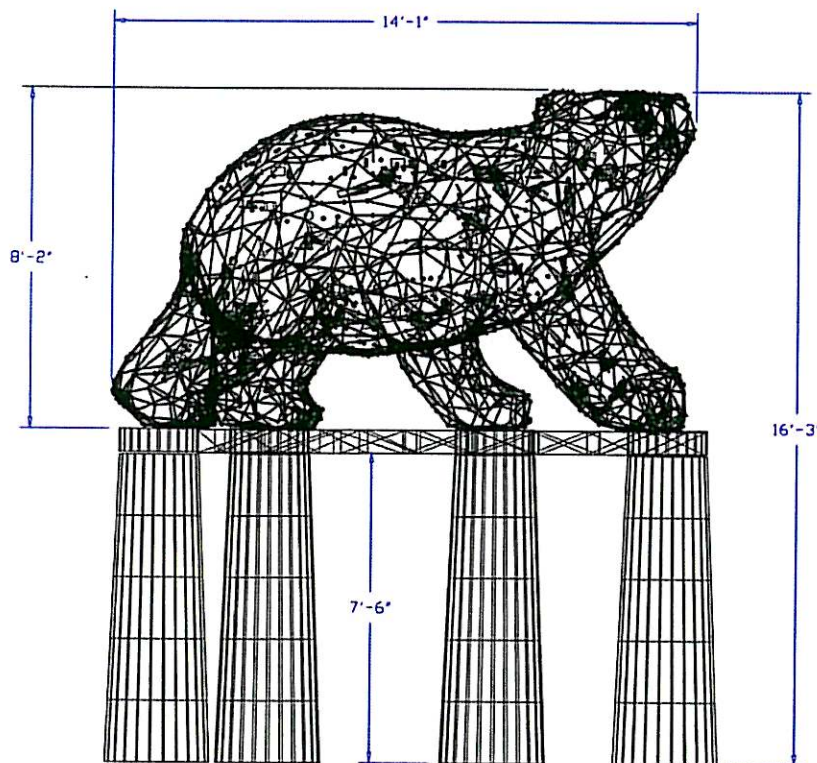
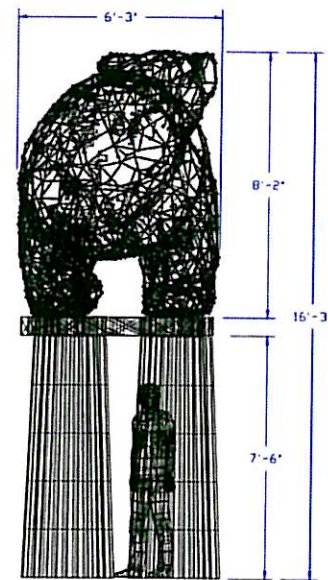
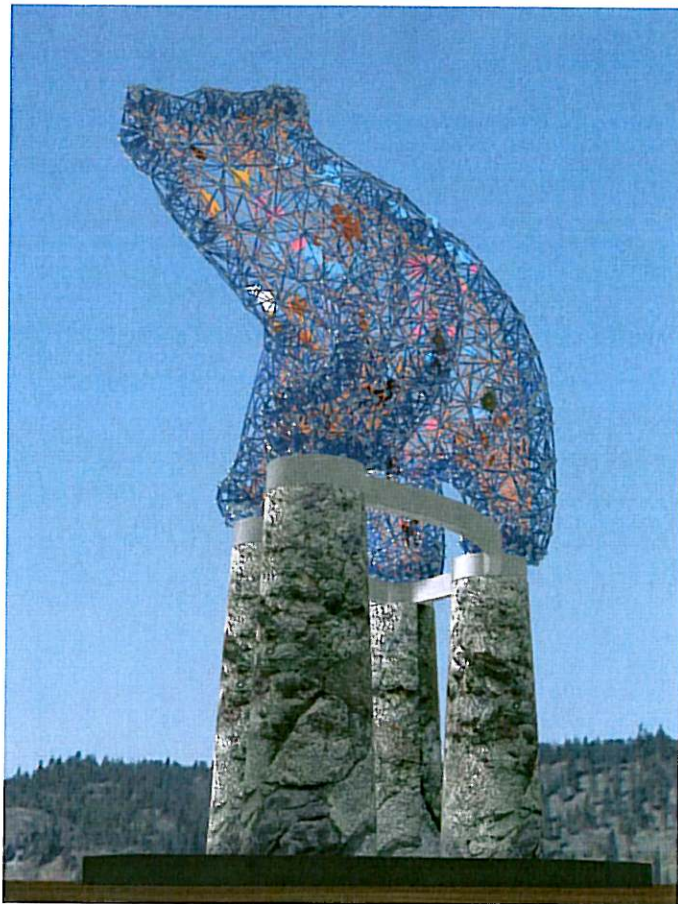


summer - city hall to lake promenade



winter section - city hall to lake promenade





'Bear' Public Art